

AGENCE PALLEN

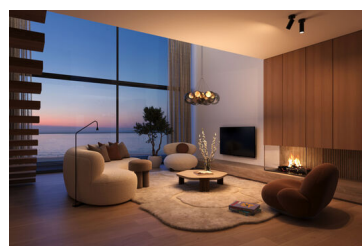
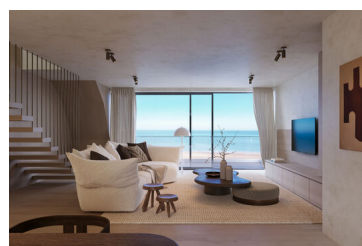
LUXURY REAL ESTATE

Project "Pierlala": Pierlala North Mezzanine 7.2

163 m² | 3 slaapkamers | 2 badkamers

Zeedijk-Duinbergen 308, 8300 Knokke

€ 2.200.000



Sublime new construction duplex / mezzanine apartment with frontal sea view.

Pierlala is a unique new construction residence consisting of 2 apartment blocks with frontal sea view (Pierlala North) or south facing apartments with panoramic views over Duinbergen (Pierlala South).

Layout of the apartment on the 7th floor in the apartment building Pierlala North:
Entrance hall with cloakroom and guest toilet. Big open living space with bright sitting area. Adjacent to the living space is the outdoor terrace which offers magnificent sea views. Practical storage room. Big open kitchen with eating area. Duplex floor: Mezzanine area with desk. Master bedroom with ensuite bathroom. Second and third bedroom. Second bathroom and separate toilet on the nighthall.

The specifications include generous budgets for the finishes of the apartments.

Consultation of the building plans and specifications is possible by appointment at one of our offices.



Do you have questions or wish to schedule a visit?
Please contact Laurence!

0472 74 35 01

LAURENCE@PALLEN.BE



Specifics

Bedrooms	3
Bathrooms	2
Habitable surface	163m ²
Total surface	173m ²
Construction year	2026
General state	Luxurious finishing touch

Legal information

Stedenbouwkundige bestemming	Residential area
Dagvaarding en herstellvordering	No
Right of first refusal	No
Verkavelingsvergunning	No
Stedenbouwkundige vergunning	Yes
Protected heritage	No

Energy

EPC ref.	EPB bij oplevering
Energy	0 kWh/m ²
Flooding sensitivity	Non-flood zone
P-score	A
G-score	A
Delineated shoreline zone	Not applicable



**Do you have questions or wish to schedule a visit?
Please contact Laurence!**

0472 74 35 01

LAURENCE@PALLEN.BE

