

AGENCE PALLEN

LUXURY REAL ESTATE



**Do you have questions or wish to schedule a visit?
Please contact Gregory!**

0489 69 07 23

GREGORY@PALLEN.BE

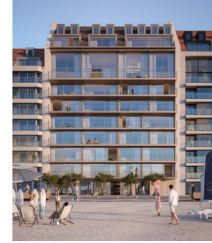


New construction project MaViMer: an exceptional new-construction project on the Zeedijk at Albertstrand

0 m² |

Zeedijk-Albertstrand 441-442, 8300 Knokke-Heist

Price upon request



MaViMer is an exceptional new-construction development comprising the stylish Vikings and Marnic residences, situated in a prime location along the seafront promenade of Albertstrand in Knokke-Heist. This exclusive complex combines refined architecture with contemporary comfort and a distinct sense of tranquility and privacy.

Both residences are elegantly connected via a discreet, secure passageway accessible exclusively to residents via a badge system. This passageway leads to a serene, green interior area on the ground floor, where private beach cabins blend harmoniously into an oasis of tranquility. An outdoor shower completes the experience, offering optimal comfort after a day at the beach.

Within this private passageway, an innovative mobility solution is also offered in the form of electric shared bicycles, easily accessible via an app. Both residences also feature a separate entrance, contributing to the project's exclusivity and discretion.

A unique and rare advantage on the Zeedijk is the presence of private garage spaces on level -1, directly accessible via a driveway on the Zeedijk. The convenience of easy access, without the need for a car lift, underscores the ease of use and exceptional quality of this project.

At the front, Residence MaViMer is characterized by a refined, green plaza that not only offers aesthetic added value but also ensures extra privacy and limited visibility on the lower floors. At the rear, you enjoy an exceptionally open view - a rarity on the seafront - where the view is defined by charming villa residences rather than high-rise buildings.

The apartments distinguish themselves through their thoughtful architecture, each featuring two terraces that offer the best of both worlds. At the front, you experience a breathtaking frontal sea view, while the south-facing terraces at the rear are bathed in light and overlook an open environment.

Residence MaViMer guarantees an exceptional living experience where location, architecture, and comfort



**Do you have questions or wish to schedule a visit?
Please contact Gregory!**

0489 69 07 23

GREGORY@PALLEN.BE



Specifics

Construction year	2028
General state	New Status
City water	Yes
Sewerage	Yes
Internet	Yes
Underfloor Heating	Yes

Legal information

Stedenbouwkundige bestemming	Residential area
Dagvaarding en herstellvordering	No
Right of first refusal	No
Verkavelingsvergunning	No
Stedenbouwkundige vergunning	Yes
Protected heritage	No
Listed heritage	Not applicable

Energy

EPC ref.	epb bij oplevering
Energy	0 kWh/m²
Flooding sensitivity	Non-flood zone
P-score	A
G-score	A
Delineated shoreline zone	Not applicable



**Do you have questions or wish to schedule a visit?
Please contact Gregory!**

0489 69 07 23

GREGORY@PALLEN.BE

