

AGENCE PALLEN

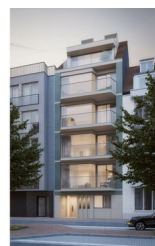
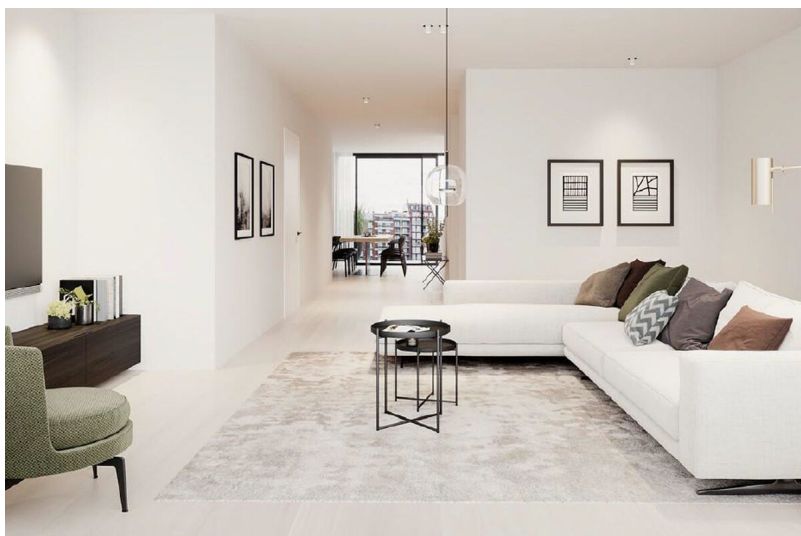
LUXURY REAL ESTATE

Grassi - Apartment 2.0

88 m² | 3 slaapkamers | 1 badkamer

Bayauxlaan 41, 8300 Knokke-Heist

Price upon request



Beautiful new-build apartment located on the second floor of Residence Grassi, in a prime location in Knokke, within walking distance of the Zeedijk and the beach.

This exclusive project combines timeless architecture with high-quality living comfort and is characterized by its intimate scale with only six apartments, each floor comprising a single residential unit.

Layout of the apartment:

Upon entering the apartment, you arrive in the entrance hall, which provides access to the open living area with dining space and a fully equipped open kitchen, with direct access to the first terrace.

Adjacent to the kitchen is a practical storage room, ideal for additional storage space.

At the rear of the apartment are the bedrooms, which also feature a second terrace.

The apartment offers the choice between two or three bedrooms, depending on the desired layout and living needs. The bathroom(s) is stylishly finished and offers all modern comfort.

Thanks to its excellent location, the apartment is just a few steps from the Zeedijk and the beach, and within short distance of Rubens Square and the lively Lippenslaan, where a wide range of shops, restaurants, and



**Do you have questions or wish to schedule a visit?
Please contact Laurence!**

0472 74 35 01

LAURENCE@PALLEN.BE



Specifics

Bedrooms	3
Bathrooms	1
Habitable surface	88m ²
Total surface	102m ²
Construction year	2026
General state	New Status
Underfloor Heating	Yes
Heat pump	Yes

Legal information

Stedenbouwkundige bestemming	
Dagvaarding en herstellvordering	No
Right of first refusal	No
Verkavelingsvergunning	No
Stedenbouwkundige vergunning	No
Protected heritage	No
Listed heritage	Not applicable

Energy

EPC ref.	EPB bij oplevering
Energy	0 kWh/m ²
Flooding sensitivity	Niet overstromingsgevoelig
P-score	
G-score	
Delineated shoreline zone	Not applicable



Do you have questions or wish to schedule a visit?
Please contact Laurence!

0472 74 35 01

LAURENCE@PALLEN.BE

